

Complete Business Computing Solutions



Simple, Secure, and Always On

You're often pulled two ways at once when managing a PC infrastructure.

On the one hand, you need to improve availability, security, management, and the end-user computing experience. On the other hand, you have to do all this and more while reducing PC management costs.

Sound familiar? Then you will be interested in ClearCube PC Blade computing — a proven solution that is helping organizations like yours to improve the performance, security, simplicity, and cost-effectiveness of PC infrastructures across the enterprise.



8834 Capital of Texas Highway North Austin, Texas 78759

Voice 512.652.3500 Fax 512.652.3501 Toll Free 866-652-3500

sales@clearcube.com www.clearcube.com

AUSTIN, TEXAS WASHINGTON, D.C. NEW YORK LONDON MUNICH SINGAPORE TOKYO



Smart Enough to be Simple

The value of the ClearCube PC Blade solution is based on a simple but powerful concept: Centralize all PC computing assets into PC Blades at a single, secured location, with end users connected to these Blades through small devices called User Ports.

The result? Dramatic improvements in the ease, efficiency, and cost-effectiveness of managing the entire PC infrastructure.

ClearCube Management Suite adds even more benefits, enabling IT staff to remotely manage the infrastructure from anywhere in the world and to consistently deliver on-demand computing to users according to their needs.

In a nutshell, ClearCube solutions deliver:

- 99.9% availability or better
- Hardened security at the physical and data level
- Simplified, remote management
- Space-efficient, flexible, and fully functional desktop computing
- 40% lower operating costs

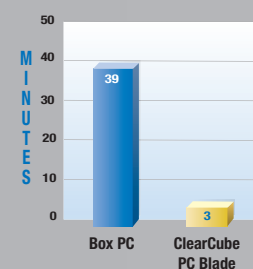
Maximized Availability

ClearCube improves availability from the industry standard of 96% to an unprecedented 99.9% or more.

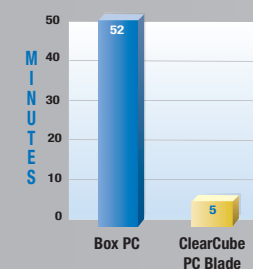
- In the event of a hardware failure, users are up and running again in minutes since PC Blades can be easily “hot swapped” from a remote location.
- PC assets are fully protected in a secured data center or telecom closet, completely eliminating damage by end users or the environment.
- ClearCube Management Suite™ sends out predictive failure alerts automatically.

Measurable Results With ClearCube

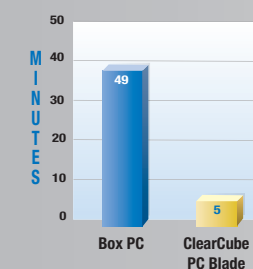
USER DOWNTIME



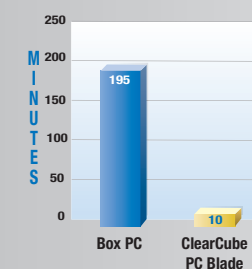
IT STAFF TIME



REFRESH/REPAIR PC



IMAGING PCs



Source: United States Air Force study.

Double-Strength Security

Security is strengthened at both the physical and data level.

- All data and physical assets are centralized in a secured data center or telecom closet.
- User Ports contain no drives, so software cannot be uploaded or downloaded by users onto diskettes or CDs.
- IT management can fully control whether users can access storage.

Simplified Management

The centralized ClearCube architecture allows IT staff to manage every computer from a remote location.

- Installs, moves, adds and changes can be performed in minutes, saving time, money, and headaches.
- Enterprise-wide software and memory upgrades can be deployed much more quickly.
- Equipment health is automatically monitored in real-time from a single console.

Ideal Work Environments

With ClearCube, users have the best of both worlds—the small footprint, flexibility, and quiet operation of the User Port combined with fully functional Intel-based PCs.

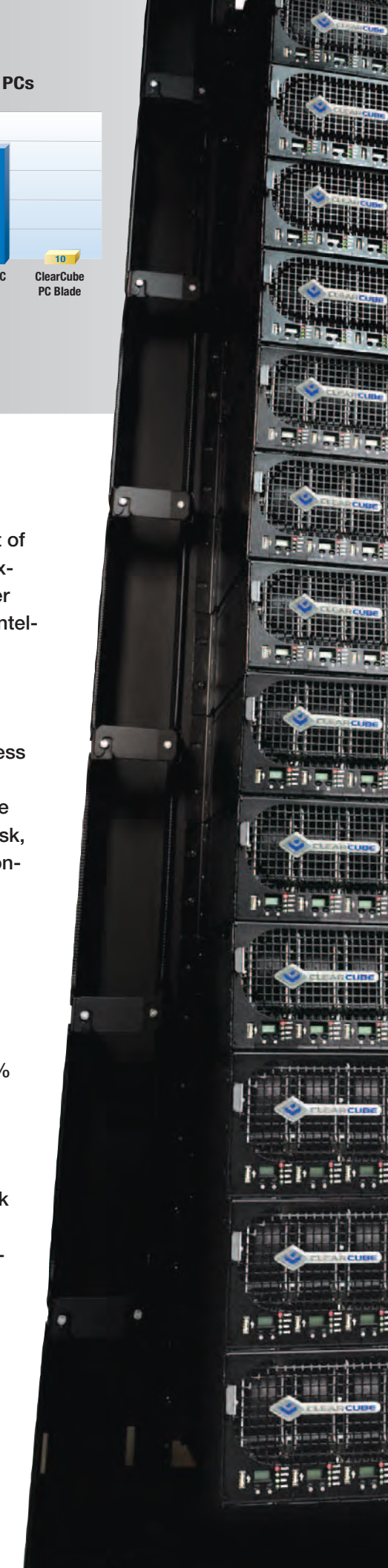
- Users avoid the clutter, noise and heat of box PCs.
- Moves are faster, easier, and far less disruptive for users.
- Flexible User Ports can rest on the desk or be mounted under the desk, on walls or in a variety of other configurations.

The Bottom Line: Lower Operating Costs

Improved availability, security, and management all lead to the same benefit—a dramatic reduction of 40% or more in the cost of managing and supporting PC end users. For example:

- Support trips to the end-user desk are reduced by 78%*.
- Cost for moves, adds, and changes are reduced by 80%*.
- Hardware upgrade time is reduced by 56%*.

* ClearCube: A New Paradigm in Reducing Desktop Management Costs, an IDC white paper.



“A fantastic step forward in desktop management...”
—InfoWorld